

This part is OBSOLETE, the SM501-1 is a possible replacement
 (Inventory Available letter www.datatronics.com/pdf/sm502-1-inventory-available.pdf)
SURFACE MOUNT TELECOM TRANSFORMER SM502-1

FEATURES

- Subminiature
- Vacuum encapsulated
- UL1459 File No. E173817 Insulation System
- EN60950 Recognized File E173817
- Operating Temperature -20°C to +85°C



- 7.36mm seated Height
- Tested at 4600 Vrms
- Weight ≈ 2 gram
- Storage Temperature -20°C to +85°C


APPLICATIONS

- MODEMS
- LAPTOP COMPUTERS
- TELECOMMUNICATIONS
- INSTRUMENTATION


ELECTRICAL SPECIFICATIONS AT 25°C

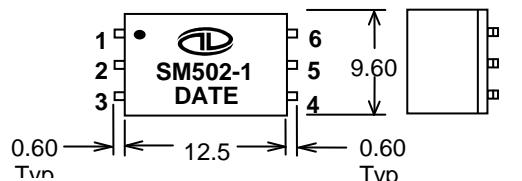
IMPEDANCE	PRIMARY	600 Ω	SHUNT INDUCTANCE (MIN)	3.8 H
	SECONDARY	600 Ω	SHUNT LOSS (MIN)	7500 Ω
TURNS RATIO		1 : 1	LEAKAGE INDUCTANCE @1KHz (TYP)	7 mH
INSERTION LOSS @2KHz (MAX)		3.0 dB	UNBALANCE D.C. CURRENT	0 mA
FREQUENCY RESPONSE @200-4000Hz (MAX)		±0.25 dB	DC RESISTANCE* PRIMARY (± 15%)	150 Ω
RETURN LOSS @200-4000Hz (MIN)		24 dB	SECONDARY (± 15%)	150 Ω
LONGITUDINAL BALANCE (MIN)		80 dB	INSULATION RESISTANCE @500VDC (MIN)	100 MΩ
DISTORTION (TYP)		-85 dB	DIELECTRIC STRENGTH for 1 minute	4600 Vrms
POWER LEVEL		10 dBm		

Note : for use with recommended circuit (BS6305 impedance Class A non-speech or Class B speech)

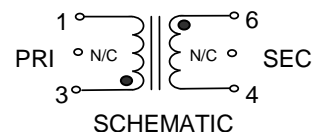
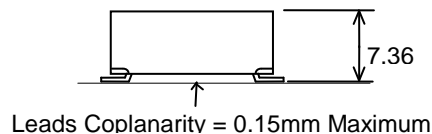
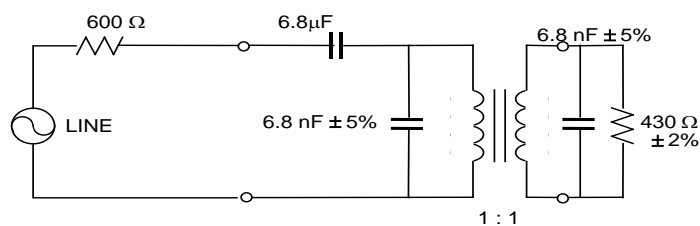
* SM502-1 is symmetrical meaning there is no real primary or secondary winding.

**SM502-1 is identical to SM-LP5002. SM-LP5002 is European version.

Terminal finish is compliant to RoHS requirements. Solder in accordance with J-STD-020D

OUTLINE DIMENSIONS


ALL DIMENSIONS IN MILLIMETERS
 TOLERANCE: XY ±0.25MM


RECOMMENDED CIRCUITS
600 Ohm Matching (speech)

BS6305 Class (A) Matching (non-speech)
