



SHIELDED POWER INDUCTOR DR340-5 SERIES

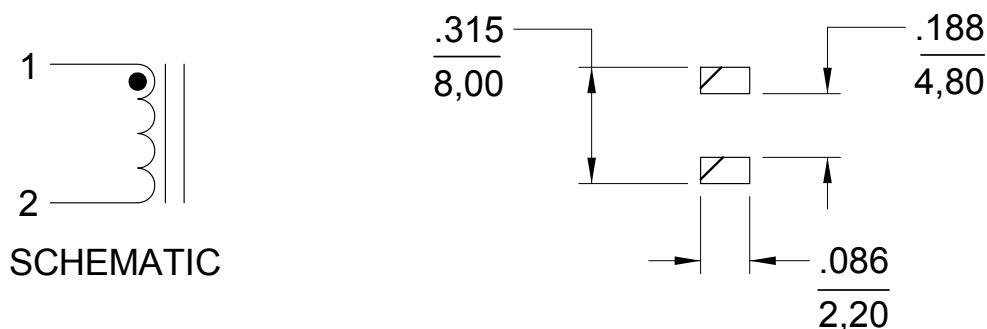
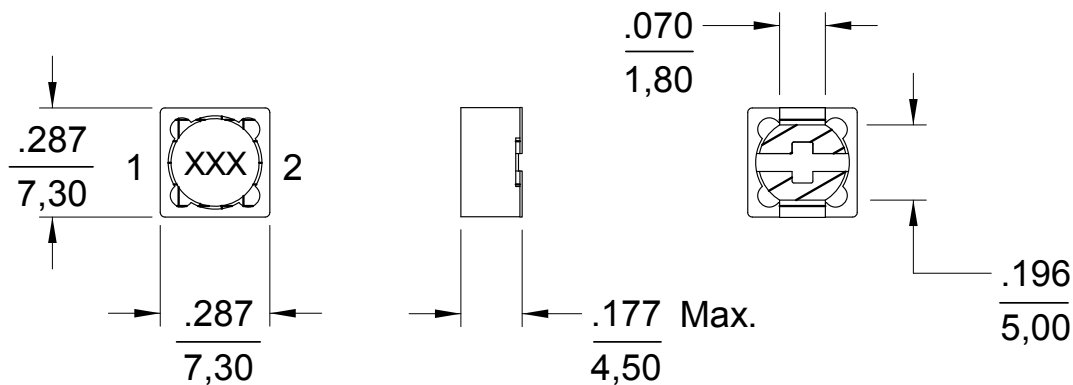
Features

- Maximum Height: 4.5mm
- Footprint: 7.3mm x 7.3mm
- Inductance Range from 10 μ H to 1.0mH
- Non-RoHS Versions are Available (Note 7)



ELECTRICAL SPECIFICATIONS AT 25°C		OPERATING TEMPERATURE -20°C to +80°C		
Part Number	Inductance (μ H) \pm 20%	Test Frequency	DCR (Ω) Max.	IDC (A) Max.
DR340-5-102	1 μ \pm 30%	1kHz	0.015	8.0
DR340-5-103	10	1kHz	0.049	1.84
DR340-5-123	12	1kHz	0.058	1.71
DR340-5-153	15	1kHz	0.081	1.47
DR340-5-183	18	1kHz	0.091	1.31
DR340-5-223	22	1kHz	0.110	1.23
DR340-5-273	27	1kHz	0.150	1.12
DR340-5-333	33	1kHz	0.170	0.96
DR340-5-393	39	1kHz	0.230	0.91
DR340-5-473	47	1kHz	0.260	0.88
DR340-5-563	56	1kHz	0.350	0.75
DR340-5-683	68	1kHz	0.380	0.69
DR340-5-823	82	1kHz	0.430	0.61
DR340-5-104	100	1kHz	0.610	0.60
DR340-5-124	120	1kHz	0.660	0.52
DR340-5-154	150	1kHz	0.880	0.46
DR340-5-184	180	1kHz	0.980	0.42
DR340-5-224	220	1kHz	1.170	0.36
DR340-5-274	270	1kHz	1.640	0.34
DR340-5-334	330	1kHz	1.860	0.32
DR340-5-394	390	1kHz	2.850	0.29
DR340-5-474	470	1kHz	3.010	0.26
DR340-5-564	560	1kHz	3.620	0.23
DR340-5-684	680	1kHz	4.630	0.22
DR340-5-824	820	1kHz	5.200	0.20
DR340-5-105	1000	1kHz	6.000	0.18

SHIELDED POWER INDUCTOR DR340-5 SERIES

MECHANICAL OUTLINES

NOTES:

1. Dimensions are shown in inches/millimeters
2. Unless otherwise specified, tolerance = Inches: ± 0.012
= Millimeters: $\pm 0,30$
3. IDC MAX based on the inductance being 75% of its initial value
4. Tape & reel quantity, 500 pcs/reel
5. Terminal finish is compliant to RoHS requirements
6. Solder in accordance with J-STD-002 Rev. D
7. Non-RoHS series parts 42-340-5-XXX are finished with leaded solder Sn60Pb40 or equivalent