



SHIELDED POWER INDUCTOR DR340-4 SERIES

Features

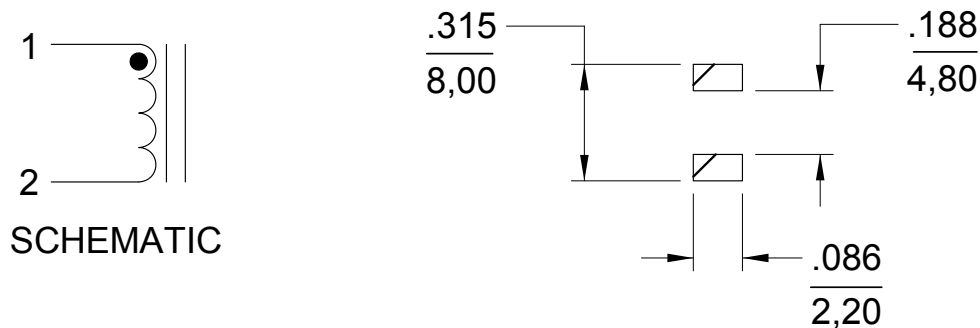
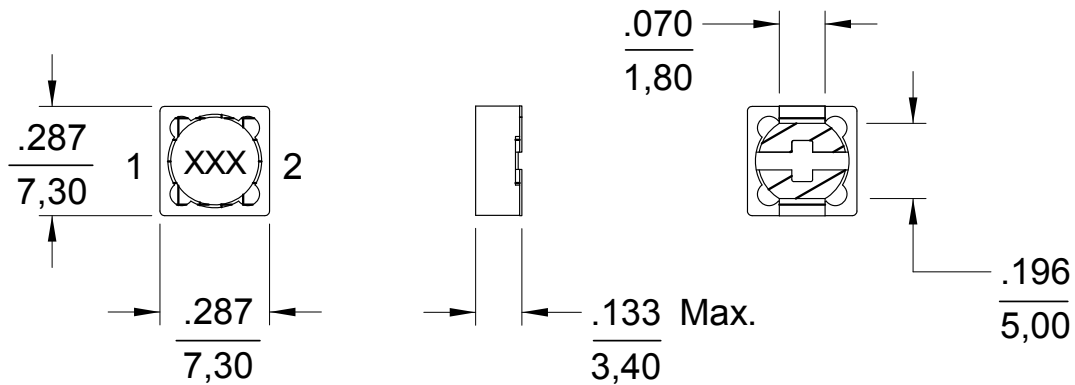
- Maximum Height: 3.4mm
- Footprint: 7.3mm x 7.3mm
- Inductance Range from 10 μ H to 1.0mH
- Non-RoHS Versions are Available (Note 7)



ELECTRICAL SPECIFICATIONS AT 25°C		OPERATING TEMPERATURE -20°C to +80°C		
Part Number	Inductance (μ H) \pm 20%	Test Frequency	DCR (Ω) Max.	IDC (A) Max.
DR340-4-103	10	1kHz	0.072	1.68
DR340-4-123	12	1kHz	0.098	1.52
DR340-4-153	15	1kHz	0.130	1.33
DR340-4-183	18	1kHz	0.140	1.20
DR340-4-223	22	1kHz	0.190	1.07
DR340-4-273	27	1kHz	0.210	0.96
DR340-4-333	33	1kHz	0.240	0.91
DR340-4-393	39	1kHz	0.320	0.77
DR340-4-473	47	1kHz	0.360	0.76
DR340-4-563	56	1kHz	0.470	0.68
DR340-4-683	68	1kHz	0.520	0.61
DR340-4-823	82	1kHz	0.690	0.57
DR340-4-104	100	1kHz	0.790	0.50
DR340-4-124	120	1kHz	0.890	0.49
DR340-4-154	150	1kHz	1.270	0.43
DR340-4-184	180	1kHz	1.450	0.39
DR340-4-224	220	1kHz	1.650	0.35
DR340-4-274	270	1kHz	2.310	0.32
DR340-4-334	330	1kHz	2.620	0.28
DR340-4-394	390	1kHz	2.940	0.26
DR340-4-474	470	1kHz	4.180	0.24
DR340-4-564	560	1kHz	4.670	0.22
DR340-4-684	680	1kHz	5.730	0.19
DR340-4-824	820	1kHz	6.540	0.18
DR340-4-105	1000	1kHz	9.440	0.16

SHIELDED POWER INDUCTOR DR340-4 SERIES

MECHANICAL OUTLINES



NOTES:

1. Dimensions are shown in inches/millimeters
2. Unless otherwise specified, tolerance = Inches: ± 0.012
= Millimeters: ± 0.30
3. IDC MAX based on the inductance being 75% of its initial value
4. Tape & reel quantity, 250 pcs/reel
5. Terminal finish is compliant to RoHS requirements
6. Solder in accordance with J-STD-002 Rev. D
7. Non-RoHS series parts 42-340-4-XXX are finished with leaded solder Sn60Pb40 or equivalent