

SELF-LEADED SMD INDUCTOR DR339-1 SERIES

Features

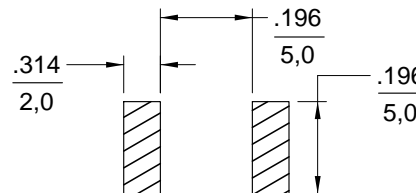
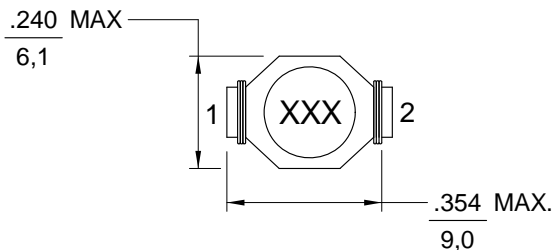
- Low Profile Surface Mount Design
- Inductance Range from 0.47 μ H to 100 μ H
- Operating Temp. -40°C to +85°C
- Non-RoHS Versions Available (Note 8)



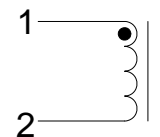
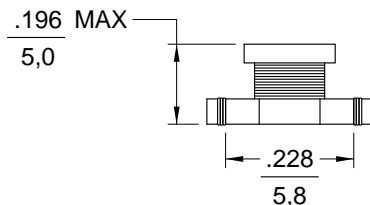
ELECTRICAL SPECIFICATIONS AT 25°C

Part No.	Inductance (μ H)	DCR (Ω) Max.	RATED CURRENT (A) Max.	I _{sat} (A) Max.
DR339-1-471	0.47 +40%/-20%	0.010	6.0	7.7
DR339-1-102	1.0 +40%/-20%	0.018	4.4	5.3
DR339-1-152	1.5 +40%/-20%	0.020	4.2	4.5
DR339-1-222	2.2 \pm 20%	0.037	3.1	3.5
DR339-1-332	3.3 \pm 20%	0.043	2.9	3.0
DR339-1-472	4.7 \pm 20%	0.055	2.2	2.6
DR339-1-682	6.8 \pm 20%	0.090	1.7	2.2
DR339-1-103	10.0 \pm 20%	0.111	1.5	1.9
DR339-1-153	15.0 \pm 20%	0.175	1.2	1.5
DR339-1-223	22.0 \pm 20%	0.255	1.0	1.2
DR339-1-333	33.0 \pm 20%	0.367	0.82	0.99
DR339-1-473	47.0 \pm 20%	0.474	0.72	0.87
DR339-1-683	68.0 \pm 20%	0.750	0.58	0.67
DR339-1-104	100.0 \pm 20%	1.110	0.47	0.53

MECHANICAL OUTLINES



SUGGESTED PAD LAYOUT



SCHEMATIC

NOTES:

1. Dimensions are shown in inches/millimeters
Unless otherwise specified, tolerance = Inches: \pm 0.008
= Millimeters: \pm 0,2
2. Isat based on the inductance being 70% of its initial value
3. Irms based on temperature rise of 40°C
4. Tape & reel quantity, 1000 pcs/reel
5. Inductance tested at -.25 Vrms @ 100kHz
6. Terminal finish is compliant to RoHS requirements
7. Solder in accordance with J-STD-002 Rev. D
8. Non-RoHS series parts 42-339-1-XXX are finished with leaded solder Sn60Pb40 or equivalent